



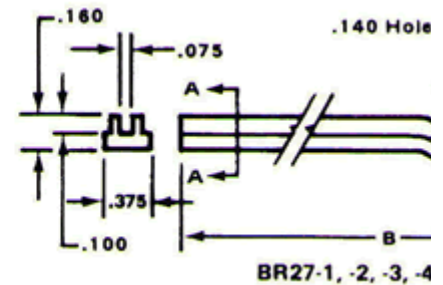
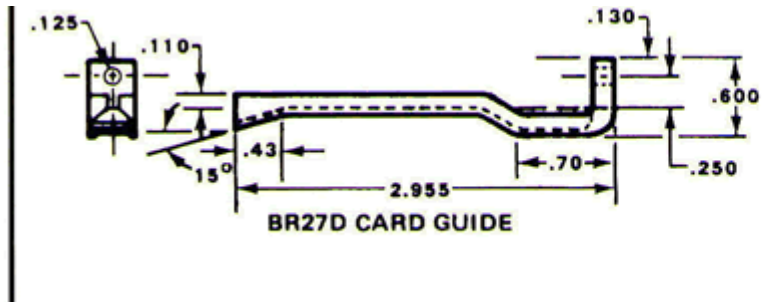
VME
VME64X
CompactPCI®

Vector Part No.: " BR27-5 "

Free standing connector mounted card guide

Part No.	Use with Connector	A	B	C	D	Application
BR27D	R644	0.60"	2.96"	0.47"	0.25"	4.5" Wide Plugboards with Cen Vector Plugbord Series 3677,
BR27-1	R644, R644-1, R644-3	0.49"	3.08"	0.35"	0.13"	4.25" wide Plugboards with cer
BR27-3	R630	0.49"	3.01"	0.36"	0.10"	2.73" Wide Plugboards with Ce Vector Plugbord Series 3796 ;
BR27-5	R656-1	0.55"	3.00"	0.42"	0.22"	4.48" Wide Plugboards with Ce Vector Plugbord Series 4610-

Dimensions and Drawing Examples



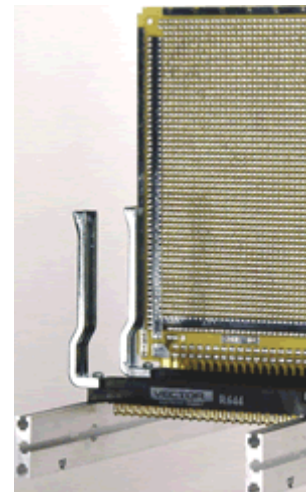
Description

Secure connection
Rugged support of 0.062" thick
Free standing circuit boards
For application in which space is premium
Several size and styles available
Aluminium alloy construction
Mounting hardware included { HD55 Hardware Kit }
TS169 " T-Strut " mounting rail available

BR27D

Typical Mounting with

Vector 3662-9 Plugbord, R644 Connector & TS169 T-Strut



Circbord®, Vectorbord® and VectorPak® are registered trademarks of Vector Electronics & Technology, Inc.
CompactPCI® is a registered trademark of PCIMG. © 2001 Vector Electronics & Technology, Inc. - All Rights Rese

webmaster@vectorelect.com